

MARINE HYBRID PROJECTS

Milestones



World's First Hybrid Tugboat

CAROLYN DOROTHY:

**Contract with Foss Maritime
Delivered in first quarter 2009**

Foss Maritime's Carolyn Dorothy is the world's First Hybrid tugboat. The project introduced a new hybrid concept - a combination of diesel engines, electric motors, generators, electrical storage, and modern power conversion techniques. It is controlled by Aspin Kemp & Associates' (AKA) energy management technology to optimize the tug's power plant efficiency. The California Air Resources Board (CARB) reports the hybrid system demonstrated a reduction by 73%, nitrous oxide by 51% and carbon dioxide (proxy for fuel) by 27%.

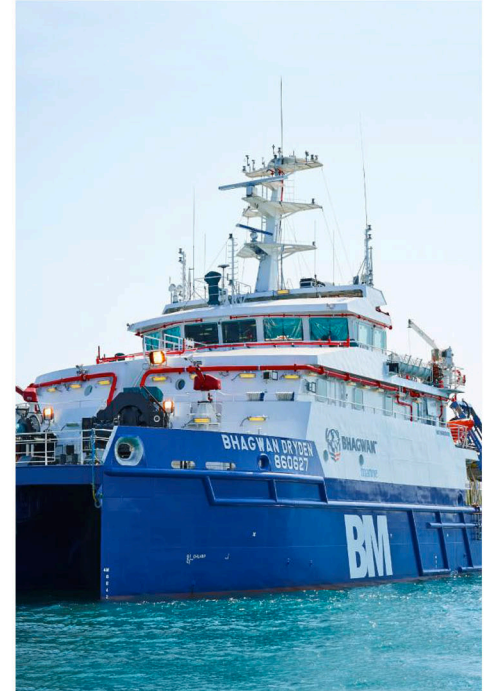


Europe's First Hybrid Tugboat

RT ADRIAAN:

**Contract with Kotug
Delivered in first quarter 2012**

In early 2012, Europe's first hybrid tugboat was introduced in the Netherlands. Kotug's Rotor Tug Adriaan underwent a hybrid retrofit and now operates in the Port of Rotterdam. The Rotortug concept is a unique tug design with two thrusters forward and one aft. This allows for enhanced operational capabilities and is a revolutionary concept in the workboat market. The hybrid system onboard the RT Adriaan has a mode for single engine operation which provides even greater fuel and emissions savings.



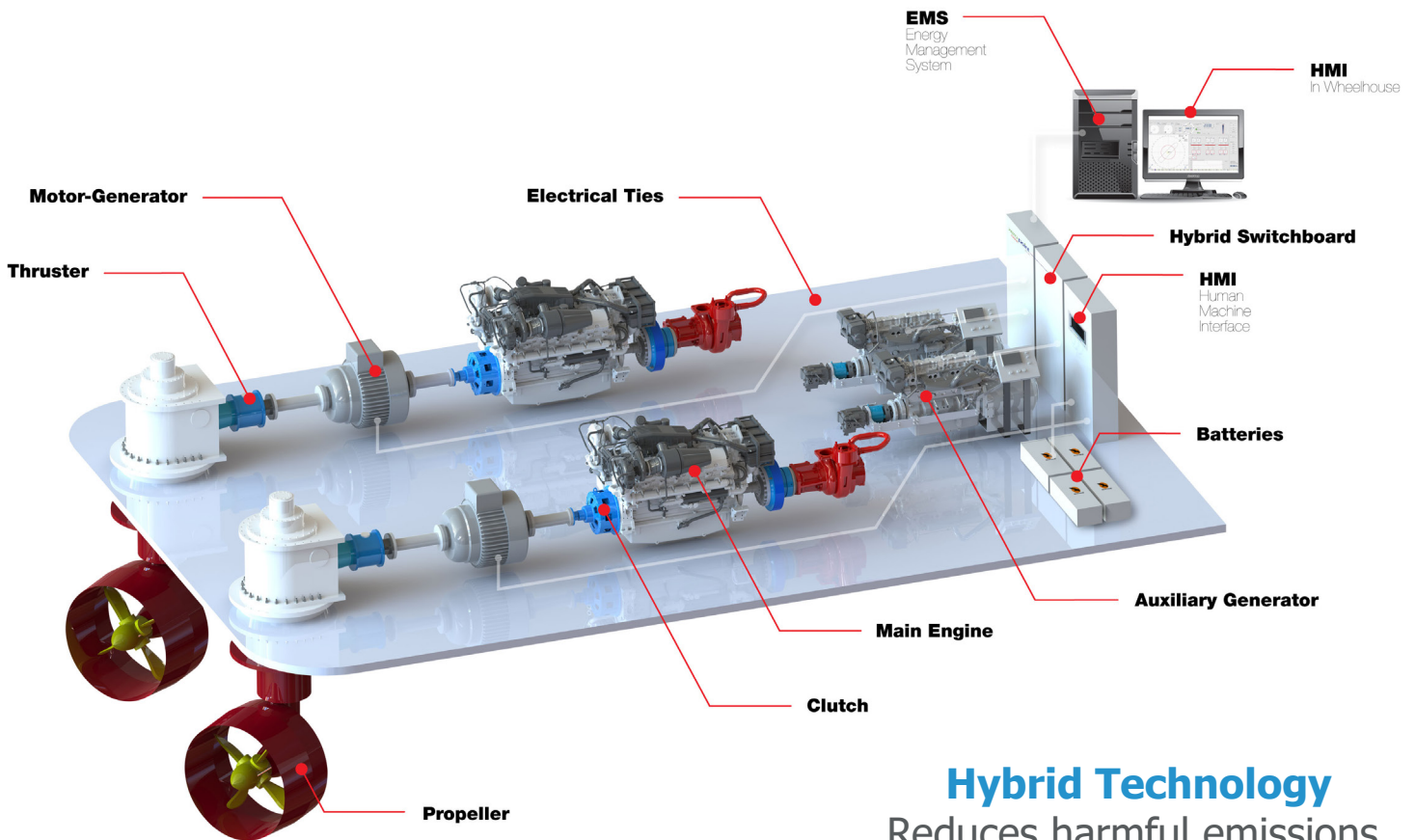
World's First Intrinsically Safe Egress Mode

BM DRYDEN:

**Contract with Bhagwan Marine
Delivered in 2014**

The Bhagwan Marine Dryden is a Dive Support Vessel which operates off the coast of Australia. It is unique in its ability to operate safely in hazardous environments including where gases are present, due to its ability to operate in all-electric mode for safe egress. It is the world's first hybrid diesel/electric vessel to hold both NOPSEMA and DMP accepted Safety Cases and is reporting approximately 65% fuel saving over traditional DSVs.

Marine Hybrid Propulsion



Sample Hybrid Configuration

Hybrid Technology
Reduces harmful emissions,
lowers maintenance costs,
and improves fuel economy.

Standard Hybrid Modes of Operation:

The AKA Hybrid System allows the vessel to operate in four different modes:

1 STRICTLY-ELECTRIC

In Strictly-Electric, batteries permit the vessel to be operated without the use of diesel engines or generators. Strictly-Electric allows operators to operate their vessel with zero emissions and complete noise reduction. Batteries are available in lead acid or lithium polymer chemistry.

2 DIESEL-ELECTRIC

In Diesel-Electric, power and propulsion is provided from the auxiliary generator via the motor generator without the need for diesel engines.

3 ELECTRICAL-MECHANICAL

In Electrical-Mechanical, both the main engine and the motor generator provide propulsive power to the shaft line.

4 CONVENTIONAL

In Conventional, the vessel operates as a traditional vessel with the diesel engines providing propulsive power and the shaft generator supporting hotel loads using modern conversion technology to provide constant voltage regardless of shaft speed.

0000-AKA-E-2022 V6_00



HEADQUARTERS
PO Box 577
23 Brook Street
Montague, PE
Canada C0A 1R0

LOCATIONS
North America - Canada
Asia - Singapore
Partnership - MAN, Germany

SALES INFO
+1.902.620.4882
sales@aka-group.com
www.aka-group.com

