

device **TRAK**

is your **PLANT  
PROTECTED**



## Power Plants Need Mission-Critical Device Protection

*deviceTRAK* is a unique configuration management regimen that captures, controls, and protects system-specific configuration settings and support software for programmable devices.

### **deviceTRAK Provides Power Plant Protection**

In the event of a component failure, spare parts are a necessity. With the proliferation of automation and electronics used in modern plants, addressing system failures is not as easy as simply replacing that component.

Replacing PLCs, motor drives, adjustable circuit breakers and timers are possible, but if the configuration files or programmable settings of that device are unknown, the device and potentially the entire system can remain inoperable.

*deviceTRAK* stores identified connection hardware and software for use with specific devices and the onsite location of these items for easy reference. Step-by-step procedures are provided for

connection to, and interaction with, devices including:

- Load to Device,
- Save to Flash,
- Restore Configuration File, and
- Compare Configuration Files.

Original equipment manufacturers' documents are stored for reference as required and device images are displayed for additional verification of the programmable device.

## Benefits

- Assists long term system operation and integrity. Plant maintainers can confidently diagnose faults and re-program defective devices using the correct configuration, auxiliary tools and step-by-step procedures.
- Database is updatable from onsite or remote locations with unique user access capabilities.
- Provides a single controlled source for all programmable device data, alleviating the need to search for configuration files and the uncertainty caused by their unknown programming accuracy.
- Previous configuration files are kept in the archive should there be a need to revert to previous configurations at any point.
- Eliminates inconsistencies by identifying devices in the database with the naming convention used onsite and on the device itself. Device images verify that proper information is being retrieved for the devices being attended.

Make **deviceTRAK** part of your inventory

## Features

**Captures** system-specific configuration data including the communications interface (auxiliary tools and software) for every programmable device in the plant, including common configurations.

**Controls** and maintains current and historical configuration files in a single location.

**Protects** configuration files using a "Check-In" "Check-Out" vault feature (password protected) providing differing levels of accessibility to ensure maximum security.

**Provides** device-specific operational documentation, verification images of devices as well as step-by-step procedures for connection to, and interaction with, configurable devices.

**Software Registry** lists every captured programmable configuration of the systems in the plant. The software registry provides auditable evidence of the device information included in *deviceTRAK*.

**Searchable Database** makes specific information easy to find. Searches can be done based on system, sub system or device name to quickly locate the material required.

**SQL Database** delivers predictable, secure and scalable performance. *deviceTRAK* is built on an industry recognized platform.

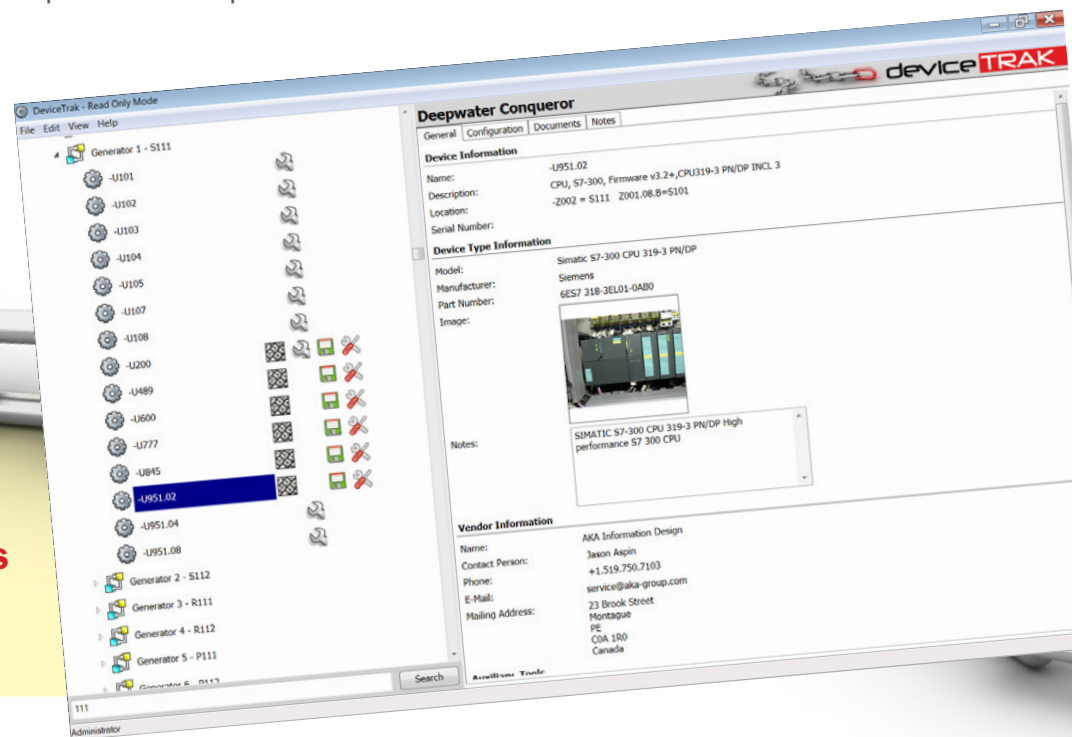
**Network Ready** design provides connectivity in the plant where required. *deviceTRAK* allows safe sharing of data when multiple people view the same information at the same time.

## The Process

AKA provides the following:

- The *deviceTRAK* software ready for database population;
- Professional installers for initial software installation and database population;
- Assurance that all information is current and accurate;
- Expert training and guidance to assist in implementing *deviceTRAK*;
- Device reports listing all captured devices and associated information;
- A gap report indicating those devices for which insufficient information is available for device restoration.
- A regimen to identify equipment, auxiliary tools and support software captured in the *deviceTRAK* audit; and
- Routine audits and reviews of protected data.

Configuration files and programmable settings are essential spares.



**deviceTRAK**



# device **TRAK**

*deviceTRAK* is a unique configuration management regimen that *captures, controls, and protects* system-specific configuration settings and support software for programmable devices.



**HEADQUARTERS**  
PO Box 577, 23 Brook Street  
Montague, PE COA 1R0  
Canada

**LOCATIONS**  
North America - Canada  
EU - Germany  
Asia - Singapore, China

**SALES INFO**  
+1.902.620.4882  
sales@aka-group.com  
[www.aka-group.com](http://www.aka-group.com)